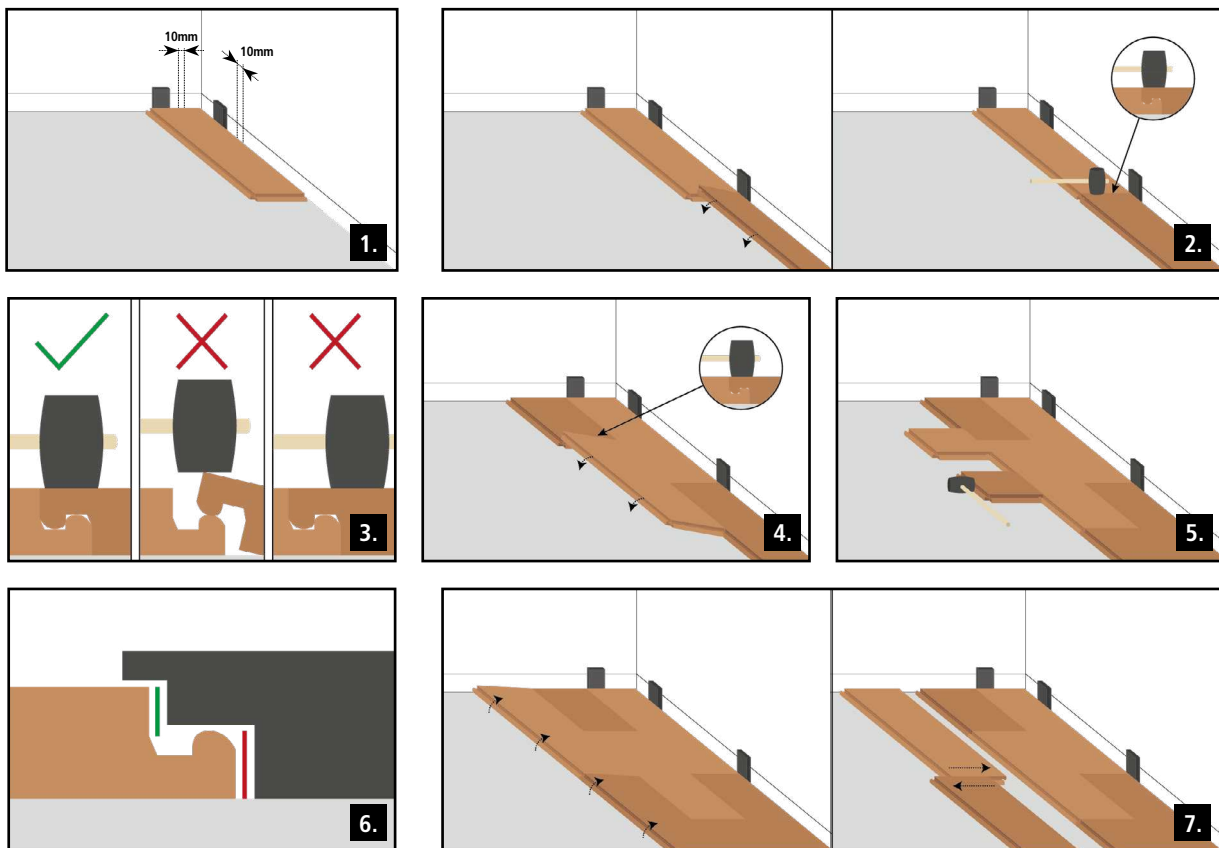


## INSTALLATION INSTRUCTIONS

## Linkfloor Supreme

**I. GENERAL INFORMATION**

These installation instructions only refer to vinyl flooring. All of the advice is based on the latest technical information.

The information given in these installation instructions follows general standards. All instructions and advice should be followed to ensure the correct and satisfactory installation of the flooring. Vinyl flooring can only be stored and installed in indoor areas with a stable climate and a minimum ambient temperature of 18° and a maximum of 29° C before, during and after installation. Temperatures above or below the aforementioned levels may damage the flooring. The maximum relative humidity should not exceed 65% during installation. Before installing it, carefully check that the product has not been damaged during transportation and we recommend checking the color, design, quantity, dimensions and appearance against the ordered product and for any visible defects, prior to installation. Damaged material will never be replaced once installed. Some differences in the color and structure are due to the very nature of the material, so they cannot be the subject of any claim.

**II. PREPARATION**

1. Store and transport your vinyl flooring in a way that prevents any deformation; always keep it on a flat surface. The vinyl flooring can only be stored and installed in indoor areas. Never store the boxes vertically or in a damp environment, in rooms with dust, places with extreme temperatures or exposed to drafts. Store the material in a horizontal position, without resting it against walls, laying it flat on strips or on the pallet, and 0.5 m away from any walls. It is essential to let your flooring acclimate to the room in which it is going to be installed, for at least 48 hours prior to installation, at a temperature between 18°C and 29°C. It is necessary to maintain the same temperature before, during and for at least 72 hours after completing the installation.

Always start installing on an empty surface to prevent the vinyl boards from being damaged by tools, etc. before, during and after installation.

Combining pieces from at least 3 different boxes during installation will help to ensure an even distribution of any minor variations in color or slight variations in texture and brightness levels. Please bear in mind that the uniformity of the color of the boards can only be guaranteed for boards from the same shade.

No claims can be made for boards that have already been cut or installed.

2. The type, quality and preparation of the subfloor largely determine the end result of the installation. Appropriate steps should be taken if the floor is not suitable for installing the vinyl flooring, as any unevenness in the subfloor may leave marks on the vinyl flooring and damage the machined profile of the joint between pieces. It is advisable only to install the floor covering when the building is free from any risk of water damage (i.e. when the exterior walls, doors, windows and roofs have been installed), when the necessary measurements have been taken of the support layers and any additional work has been completed.

Remove any existing floor covering; there should be no signs of mold or insect infestations; make sure that the subfloor is even. As a general rule, the subfloor where the flooring is going to be installed must be compact, solid, flat, stable, non-deformable, dry, free of rising damp, without cracks, clean and free of substances that are not perfectly anchored and dust. If necessary, apply a leveling compound on top to achieve a smooth, even and fully prepared floor.

3. Make sure that the subfloor is completely even. You must correct any unevenness exceeding 2 mm that is greater than 1 m long, and any unevenness exceeding 3 mm that is greater than 2 m long. Vertical surface unevenness exceeding 1.2 mm is not permitted. The subfloor should not slope more than 25mm per 2 meters in any direction. Use a suitable leveling compound and check if a sealer or primer is required. It is essential to correct any imperfections and cracks on the surface.

4. The vinyl flooring should not be screwed in or fixed to the floor in any way. Avoid placing heavy furniture on the flooring that would impede the normal movement of the floating floor.

5. You must take into account the building's joints; a transition profile can be used to place a joint in the flooring.

6. The subfloor's humidity should be no greater than 2.5% CM (cement) or 0.5% (anhydrite).

Make sure that the subfloor is completely dry, smooth, stable, clean and free of grease and chemical stains. All touch-up work on the subfloor should be performed using a mixture of non-shrink and waterproof cement. Work in accordance with UNE EN:14472.

7. Always install all of the boards parallel to the room's main light source. It should only be installed lengthwise in long and narrow rooms.

8. Check all of the panels before and during installation in optimal lighting conditions.

9. Necessary tools: knife or cutting disc for wood, tapping block, pull bar, spacers, tape measure, pencil, white rubber mallet or hammer, spirit level, block of nylon if necessary, tools for preparing the base floor.

**III. SUBFLOOR INFORMATION**

Although a floating vinyl floor is installed, careful preparation of the base floor helps to ensure a satisfactory installation. Rough or uneven areas in the subfloor can be transferred to the newly-installed vinyl flooring, put pressure on it and lead to breakages, the loosening of joints, buckling, warping, noise when walking on it and an unsightly overall appearance. Do not install it on a floating floor.

**Wooden base floors:**

Vinyl boards should not be installed on wooden base floors that lie directly on cement or beam constructions.

All wooden or wood composite panels are suitable as base floors for vinyl boards, provided that they are smooth, flat, structurally sound and free of buckling.

Plywood panels, particle boards and oriented strand boards (OSB) are suitable. Make sure that they are properly secured to avoid any annoying noise when walking on them. Fibreboards such as MDF or HDF have very strong water absorption power and are not recommended for use in commercial areas. Make sure that the subfloor on which you lay vinyl flooring maintains stable conditions.

**Cement base floors:**

Cement base floors should be smooth, dry and free of dust, liquids, paint, wax, grease, oil, sealant and other foreign materials. The surface should be hard and sealed and free of dusty or flaking areas. New cement floors should be completely dry (drying time at least 6 weeks) and hardened. The final decision on whether a cement floor is dry enough to install vinyl flooring on it lies

with the installer. Although it is not susceptible to damage from moisture, moisture in the base floor can lead to the formation of mold, rot and mildew. The warranty does not cover cases where damage and/or discoloring is caused by mold, flooding of the vinyl flooring, dripping taps or water that has leaked into unsealed areas.

Holes, gaps, expansion joints and channels should be sealed and smoothed using a latex base. It is important for the latex base and surrounding floor to be at the same height; there should be no differences in height.

Water underfloor heating:

Vinyl flooring can be installed on floors with water underfloor heating, provided that the temperature of the floor never exceeds 27°C, as damage may appear on the vinyl flooring. It is important for the floor under which the underfloor heating is installed to be dry before the heating is turned on and before installing the vinyl floor covering. The concrete must be left to cure for at least 21 days and, in the case of anhydrite, at least 7 days. The heating is maintained at 25°C for 3 days, gradually being increased until the maximum design temperature is reached, which is maintained for 4 days. Examine the surface and repair any cracks. Heating is then resumed for 14 days and then turned off at least 2 days before the leveling compounds and floor covering are installed; it is only turned back on 2 days after installation is complete. The installation of electric radiant heating is not recommended.

#### Existing flooring

It can be installed on most existing flooring, provided that it is smooth or can be smoothed. Tiles should be smoothed by applying a cementitious overlay such as mortar.

If removing the existing floor covering is not an option, it should be leveled with a cementitious overlay or similar. The vinyl floor that is already installed should not be very heavily cushioned and only consist of one layer.

#### IV. INSTALLATION

This type of flooring is normally installed floating.

1. It is important to carefully plan the layout and installation of the vinyl floor, as this is the only way of ensuring that the boards at wall junctions and end boards are not too narrow or short. Measure the surface area of the room before starting, ensuring that the final row of panels is at least 15 cm wide at the end of the installation. Start the first row with a spirit level or iron rod running lengthwise.

2. It is necessary to make 10 mm wide expansion joints under doors, along long corridors and in areas greater than 225 m<sup>2</sup>, and along lengths greater than 15 m or widths greater than 15 m.

3. As is always the case with board flooring, the boards must be installed parallel to the room's main light source or, if this is not possible, parallel to the room's longest wall.

4. Measure the boards in the first row to determine whether they need to be trimmed along their width. If this is not necessary, cut off the tongue so that the edge that touches the wall is smooth.

5. 10 mm expansion joints must be left against walls and immobile or extremely heavy objects.

6. Always start installing with the male end facing the wall. Make sure that it is 10 mm from the wall, using the spacers. (see drawing 1) Install the second piece by placing its short part on top of the short part of the first piece that was installed, using a rubber mallet tap on the joint. You should hear a click. Do the same with the rest of the pieces in the first row. (see drawing 2)

IMPORTANT: before tapping, make sure that the joints of the two pieces are correctly aligned, otherwise you may cause irreparable damage to the joint system, also note that the tapping must be done above the joint of the two parts, if tapped near the joint it may damage the joint irreversibly (see drawing 3).

7. Install the first piece from the second row by inserting the tongue on the long side into the groove on the long side of the piece in the first row. This should be done by placing the piece at an angle of +/- 20°. Insert the long side of the second piece into the groove of the piece in the first row, placing the short part of the first piece near to the second row. Insert the piece and, by giving it a little tap, you should hear a click. A rubber mallet can be used for this. (see drawing 4) The third panel and all remaining panels in further rows should be installed as above.

The placement of the initial rows is very important. They should be completely straight; this is the only way to guarantee that the remaining rows will be completely parallel.

Align the row precisely (check with the ruler); properly attach the tongues and grooves and check that the row is completely straight. After completing the installation of each row, use scrap pieces and a small hammer or rubber mallet to gently tap the boards into the click of the previous row to make sure they are properly engaged, making sure there is no gap between the long sides of the installed pieces. Any gaps can compromise the whole installation (see drawing 5).

Use the same installation method for the subsequent panels until the desired area is completed. Make sure that the minimum distance is maintained between the panels and the wall in all rows. Before continuing with the third board, make sure that the end and side of the second board are fully inserted and pushed down. Unless it measures less than 30 cm, the rest of the board can normally be used to start the third row.

Continue with the installation, ensuring an arbitrary appearance and proper offset, so that the ends of each board are at least 30 cm from the following board.

Do not directly hit the ends or sides of the floor. When using a block of nylon, only touch the long sides of the flooring to ensure that each row is properly fitted. Avoid hitting the piece's machined profile. (see drawing 6) When installing under door frames, etc. flexibility and a small installation angle are very helpful. If necessary, use a flat iron pull bar to join the boards.

8. They can simply be trimmed with a sharpened knife around obstacles and in areas with sharp angles. It is often helpful to create a cardboard template of the area and transfer this pattern to the board. Install transition profiles in areas where you can see expansion gaps and on the unprotected corners of boards. Always fix the profiles to the wall, never to the floor.

9. When installation is complete, install the new baseboards. The guiding principle when installing baseboards is that, although the baseboard rests on the floor covering, it should never be necessary to apply adhesive or mechanical force to join them together. Baseboards should only be fixed to the wall.

10. In areas such as kitchens and bathrooms, install them in the same way as above while bearing in mind that:

- Installation is only recommended in bathrooms and kitchens for residential use.

- To prevent the ingress of water or other liquids below the flooring, apply flexible silicone sealant between the gap in the flooring and the wall.

- We recommend installing an expansion joint on bathroom and kitchen doors.

- Do not place kitchen or bathroom furniture or any other overly heavy items on the flooring. If it is necessary place an expansion joint around the furniture, a profile can be used to improve its appearance.

- Do not install LINKFLOOR flooring in rooms with water drains in the subfloor.

Make sure that no boards have been fixed to the floor in any way. Protect the boards from direct sunlight before, during and after installation to prevent any discoloring of the floor and any buckling or deformation of the boards. We recommend protecting windows with UV protection sheets or curtains.

Inspection: When the installation work is completed, the installed flooring must be inspected, observed in a standing position, with natural light behind the observer. No angled light sources should be used and there should be no backlit inspection of the floor to locate any unevenness on its surface. The final inspection of the installed flooring will be performed within seven days, with the supplying company being informed of any observations that are deemed appropriate. When the installation and verification work has been completed, whoever is in possession of the installation at any given time is responsible for maintaining these conditions.

#### V. REPAIRS

Vinyl floors are tough and durable. However, if one or more boards are damaged, they can be replaced.

Separate the whole row by lifting it up delicately at an angle. To separate the boards, leave them flat on the floor and slide them apart. If the planks do not separate easily, you can slightly lift up the planks (5°) and slide them apart (see drawing 7).

If the damaged board is in the middle of the room, the simplest thing is to take up all of the boards until you reach the damaged one. Remove and replace it and reinstall the other boards according to the installation instructions. Carefully follow the removal instructions explained above, parts with broken or damaged machining cannot be reinstalled.

#### VI. MAINTENANCE

Place a doormat outside each front door to prevent dirt, sand, gravel and other substances such as oil, asphalt, etc. from dirtying the floor and possibly damaging it.

Only use colorfast carpets on your floor. Do not place rubber-backed or latex-based carpets or coconut fiber mats on the vinyl flooring as they may stain the flooring or damage the surface. They may also cause a magnifying effect, affecting the dimensional stability of the pieces, resulting in deformation and buckling. We recommend protecting windows with UV protection sheets or curtains.

When the sunlight is strong, close the curtains or blinds, especially when the sun is shining on the floor. A combination of heat and sunlight can cause discoloring, fading and warping on a lot of furniture and flooring. Stick plastic protectors below all furniture. Ideally they should measure 2 cm in diameter and rest flat on the floor. Felt protectors or castors (type W) are also acceptable. Chairs with castors should be protected by plastic to prevent any wear due to friction. Protective plastic should be placed under chairs with castors to prevent wear and tear due to friction. Make sure that any metal protectors below the furniture are rust-free.

If you have to slide heavy furniture or appliances over the vinyl floor,

please always use a mat as a support base to protect the floor. Always use a support base, even when using a trolley with castors or when the heavy objects have castors. Clean your floor at least once a week using clear water.

Wash the floor with a cleaning product that is suitable for normal flooring if you are unable to remove the stains by washing it with nothing but clear water. Follow the instructions of the manufacturer of the cleaning product, as if you use too much it may leave a film on the floor.

Do not use soap or chemical cleaning products as they may give the floor a dull appearance.

#### Tips for removing stains

It is highly stain-resistant and most liquids can be easily and quickly removed with a clean, white cloth. However, some liquids are more difficult to remove. The way to remove them is described below. Carefully follow the tips that we provide to remove stains etc. Always work with a clean white cloth. Avoid spreading the stain. Wash the treated area in different stages if necessary and allow the floor to dry properly.

Do not use bleach or wax; do not use a polishing machine. Allow each layer of the polishing product to dry properly.

Also avoid using abrasive detergents, which may affect the brightness of the pieces. L'Antic Colonial recommends using Clean and Green Active to clean vinyl flooring.

The installation should be planned to coincide with the final finishing phases and, whenever possible, after painting work is completed. During finishing work, the moisture and temperature conditions established for the rooms in the above sections of this manual must be maintained. For flooring used in the finishes of large projects, a number of weeks (or even months) may pass between installation (whatever the system) and the start of the finishing work. In such an event, the LINKFLOOR should be protected with suitable material by the owner of the site, in each subsequent phase of the construction works. We recommend using a breathable material for that purpose.

WARNING: Some types of nails, such as normal steel nails, can change the color of the vinyl flooring. It is not advisable to screw in or glue the base panels! Solvent-based adhesives may also discolor vinyl flooring. Any discoloration of the vinyl floor caused by improper handling or by using the aforementioned substances is not the responsibility of the manufacturer; it is the responsibility of the installer.

STAIN/PROBLEM	REMOVE
Food, Beverages	If the substance is gummy, scrape it off with an uns-sharpened utensil. If you are unable to completely remove the substance, use the intensive cleaning product Clean & Green Active, a remover with a soft nylon pad or a very soft brush. Soak a white cloth in the intensive cleaning product, place it on the stain and leave it to act for no more than one hour. It should then be possible to remove the stain.
Rust	Clean the affected area and use an intensive cleaning product, a soft nylon pad or a very soft brush. Soak a white cloth in the intensive cleaning product, place it on the stain and leave it to act for no more than one hour. It should then be possible to remove the rust.
chalk, ink, hair dye, permanent marker	Clean the affected area and use an intensive cleaning product such as Clean and Green Active, a soft nylon pad or a very soft brush.

#### VII. LIMITED WARRANTIES

This warranty covers all manufacturing defects, under normal conditions of use and with correct assembly and installation in accordance with the recommendations of L'Antic Colonial, S.A.U., for a period of three years from the date of purchase by the first user. L'Antic Colonial, S.A.U. hereby guarantees that our products covered by this warranty are of first quality and have the warranty granted by ISO 9001 certification and the Declaration of Conformity

related to CE Marking.

We recommend a careful check of the condition of the goods at the time of delivery. Any anomaly, damage or breakage detected during transport must be noted on the delivery note of the transport agency.

#### COVERAGE

This guarantee includes all L'Antic Colonial products.

In the event that damage or defects are reported in any of the products covered by this warranty, L'Antic Colonial, S.A.U. will carry out the relevant tests in order to establish the suitability and quality of the product. Should it be established that the reference in question does not comply with the parameters established in international standards, L'Antic Colonial, S.A.U. will repair or replace the product(s) in question with the same product(s), reserving the right, at the sole discretion of L'Antic Colonial, S.A.U., to make cash returns, which will correspond only to the net value of the product at the date of purchase.

#### WARRANTY COVERAGE TIME

This warranty certificate is valid for three years from the date of purchase of the product, understood as the commercial date recorded on the purchase invoice relating to the first user.

Replacement of a product or cash refund in the event of a claim will not alter or extend the original terms set forth in this certificate, which is issued solely and exclusively to the natural or legal person registered on the purchase invoice. This warranty is not transferable.

#### WARRANTY CONDITIONS

L'Antic Colonial, S.A.U. shall be obliged to repair or replace products covered by this warranty provided they meet the following conditions:

- The product must have been purchased in an Official Dealer.
- The product must not have been altered or modified since its shipping from factory.
- All recommendations for installation, use and maintenance from L'Antic Colonial, S.A.U. must have been respected.
- The products must not have been used, or have been exposed indefinitely in any showroom, the warranty period for these items being of 30 days.
- The products must be accompanied by valid proof of purchase.
- The product's purchase price has been completely satisfied.

NOTE: The warranty document shall be applicable, subject to consumer rights established by the law in force in each country as well as the provisions of European Community legislation.

#### EXEMPTIONS

This warranty covers defects relating to the intrinsic quality of the product arising from manufacturing defects and therefore does not cover the following situations:

##### a) Improper maintenance:

- Derived from the use of products not recommended by L'Antic Colonial, S.A.U., for initial and periodic cleaning.
- Derived from subjecting products to substances that may cause a chemical attack, as well as from subjecting the product to abnormal conditions (this includes, but is not limited to, damage from misuse or transportation, damage from excessive heat, exposure to adverse weather conditions, damage from improper care and maintenance causing chipping or breaking).
- Derived from the extended contact of products with agents that can stain or erode the surface in any way.
- Derived from disregarding the maintenance and cleaning recommendations established in the manuals and guides of L'Antic Colonial, S.A.U.
- Derived from the inadequate transport and/or storage of the product since its departure from our establishment.

##### b) Installation faults or defects:

- Derived from the omission of the recommendations established in the installation, laying and use manuals of L'Antic Colonial.
- Derived from inadequacies in the leveling, tuning, drying and/or curing of the support surface.
- Derived from structural deficiencies, as well as incorrect location, laying and/or treatment of expansion, perimeter and structural joints in the installed area.
- Derived from the use of products not recommended by L'Antic Colonial, S.A.U., for installation and/or maintenance.

##### c) Abnormal use of the products:

- Derived from the use of the product in contexts other than those specified by L'Antic Colonial, S.A.U.
- Derived from the installation of the product in environments that exceed the traffic and working conditions determined by L'Antic Colonial, S.A.U.
- Derived from the application of additives and surface elements not recommended by L'Antic Colonial, S.A.U.

d) Facts not attributable to L'Antic Colonial, S.A.U.:

-Actions or omissions that may affect the product, regardless of whether these are carried out by the buyer or by third parties. This includes, but is not limited to: damage or injury caused by unintentional acts, working conditions, architectural or engineering design, structural movements, acts of vandalism or accidents.

-The normal features and evolutions of the natural product. There may be slight differences in shade between the different elements that compose it and differences in hue or grain. In addition, if the products are compared at different times, time and weather conditions may cause variations in color and/or hue.

-The customer's personal preferences such as color, workmanship, etc. The choice of color and finish must be definitive before closing the purchase, as subsequent changes of decision will not be covered by this warranty.

-Installed parts with obvious visual defects, including labor costs for disassembly and assembly of products with visible defects. We recommend that the material be checked for defects prior to installation.

-Natural and public situations not related to the product such as earthquakes, landslides, floods, fire, vandalism.

-Normal wear and tear.

-Damage caused by moisture, wear due to use, wear caused by stones, sand or other abrasives.

#### EXCLUSIONS

Being related to the intrinsic quality of the products, the warranty of L'Antic Colonial, S.A.U., does not cover:

- the value of installation and reinstallation materials;
- any legal interest on the value paid for the products;
- The value of the damages, whether direct or indirect, that may be generated before and/or during the claim or repair process to the commercial, industrial, professional or residential activities of the buyer, the user of the product or a third party.
- the costs of materials or labor associated with the reinstallation of the product covered by the warranty after replacement by L'Antic Colonial, S.A.U., nor any additional repairs or modifications such as plumbing, electricity, coatings, veneers and modifications that may be necessary for the replacement of the product covered by this warranty (such repairs and modifications shall be the responsibility of the end consumer);
- No other value not described in this certificate.

During the term of this guarantee, L'Antic Colonial reserves, without prior notice, the possibility of modifying the technical specifications and design of their products which should not be considered as manufacturing defect.

The company L'Antic Colonial, S.A.U. also reserves the right to visit the site, according to a previously agreed date, in order to examine the product and check the warranty conditions.

**L'ANTIC COLONIAL, S.A.U., WILL NOT BE HELD RESPONSIBLE FOR ANY SPECIAL, INCIDENTAL, INDIRECT OR CONSEQUENTIAL DAMAGES, AMONG OTHERS: LOSS OF PROFIT, REVENUE OR INFORMATION (WHETHER DIRECT OR INDIRECT) OR LOSS OF BUSINESS FOR BREACH OF ANY EXPRESS OR IMPLIED WARRANTY OF ITS PRODUCT, EVEN IF L'ANTIC COLONIAL, S.A.U., HAS BEEN PREVIOUSLY ADVISED OF THE POSSIBILITY OF SUCH DAMAGES.**

Some local jurisdictions do not allow the exclusion or limitation of special, indirect, incidental, or consequential damages, so this limitation or exclusion may not apply to you.

**EXCEPT WHERE PROHIBITED BY APPLICABLE LAW, ANY IMPLIED WARRANTY OR CONDITION OF MERCHANTABILITY OR FITNESS FOR A PARTICULAR PURPOSE WITH RESPECT TO THIS PRODUCT IS EXPRESSLY EXCLUDED. Some local laws do not allow limitations on how long an implied warranty lasts, so this limitation may not apply to your jurisdiction.**

#### PROCESSING OF A WARRANTY CASE:

If you wish to validate this warranty, be sure to follow the steps below:

- Verify that you have complied with all the steps and requirements established in the installation, use and maintenance manuals of L'Antic Colonial, S.A.U.
- Report in writing to the authorized dealer/seller or directly to the company L'Antic Colonial S.A.U., Crta. Nacional 340, km 54, 12540 Villarreal, Castellón, Spain within 30 days of the occurrence of the damage or defects.

The warranty does not affect the legal rights of the consumer and user in the event of non-conformity of the products with the contract. The action to claim compliance with the provisions of the additional commercial warranty shall lapse six months after the end of the warranty period.